



EASY SWAP™
Future Basin

KRÜGER AVIATION

*specialized
in plastic*

With nearly 100 years' experience in manufacturing plastic parts the Krüger Group is one of the biggest pioneers of the industry. Meeting the increasing requirements of the industry and fulfilling our customers' needs has been, and always will be, the main focus of the Company.

For this reason, we decided to concentrate the aviation business of the group in a specialized company and founded the Krüger Aviation GmbH in 2016. A technologically advanced manufacturing company dedicated solely to supplying the modern aviation industry. Since 2021 Krüger Aviation GmbH is a fully independent entity.

Market Sectors:

- Lavatory
- Lighting
- Seating
- Trading
- Cabin

Employees

- 40 highly qualified aviation experts

Certifications

- EN 9100
- EN 9120



THE STYLISH FUTURE OF AIRLINE BASINS

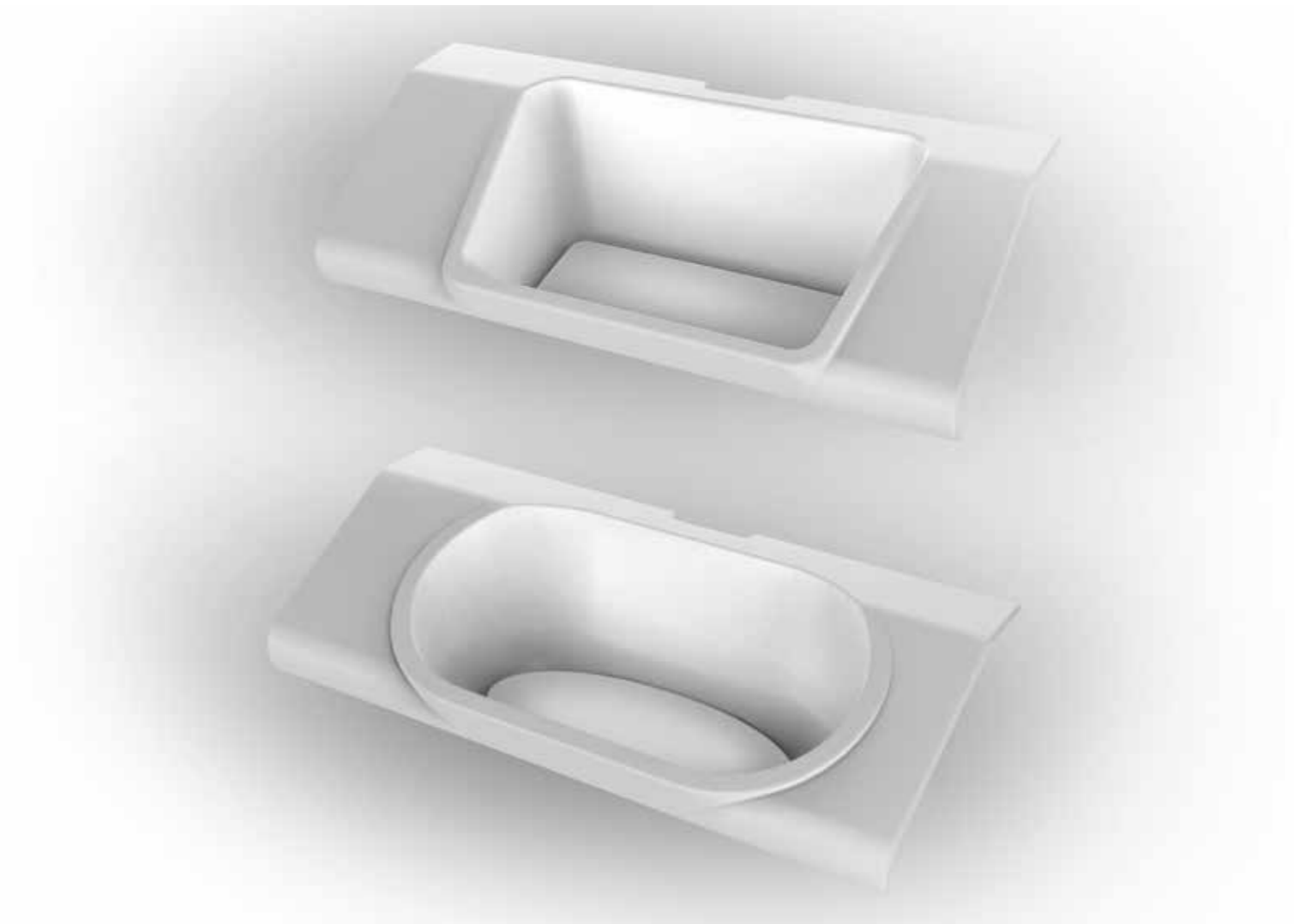
Cost Saving and Light

The K2 EasySwap Future Basin is a revolutionary new take on the lavatory washbasin. For the first time, you can change your color concept or even revise your entire lavatory design in just five minutes. This not only reduces airline maintenance times and costs, it also allows for almost endless airline-specific design options and customizable features.

What's more, the basin is made of plastic, a much lighter weight alternative to the materials currently used.

Our application is divided into the following sections:

- This basin needs more than a wash...
- More design for less money
- The Easy Swap principle
- Simple design, practical functions
- Make your airline stand apart



THIS BASIN NEEDS MORE THAN A WASH...

The washbasins in all standard airplanes are made of metal or acrylic-based mineral materials, and they are rarely, if ever, replaced.

Yellow streaks appear around the rim of the basin and calcification wreaks havoc on the appearance. Efforts to rectify this problem are time consuming and seldom successful.

Why is this the case?

Because today's airplane washbasins are often fixed components of larger supporting structures. These in turn are connected with other modules, with the connection points concealed for aesthetic reasons, and the water and drainage systems are permanently connected with the washbasin. Replacing a faulty faucet can therefore easily take up to four hours, and every step threatens greater damage to the surrounding structure.



MORE DESIGN FOR LESS MONEY

Our focus in designing the K2 EasySwap Future Basin was on creating a revolutionary washbasin that could be quickly and easily replaced. Our EasySwap System lets airlines reduce maintenance and ground handling times while also allowing them to customize their lavatories for the first time.

The surface components (featuring the respective design elements) can all be detached from the supporting structure and water systems, giving a multitude of design options as well as eliminating the hassle and risk of damage when replacing or redesigning the structure.

And thanks to their simple and reliable fastening systems already in use in the aviation industry, replacing them takes five short minutes.

Featuring a sophisticated design and comfortable size, the washbasin is both aesthetically appealing and functional. Its sloped surfaces and minimized joints protect against dirt and water collection. Its low front edge also makes it easy for children to use.

Innovations:

- Cost savings through accelerated maintenance processes
- Airline customization



THE EASY SWAP PRINCIPLE

The modular structure of the components, which keeps the number of joints to a minimum, makes replacing individual parts easier than ever before. The washbasin can be replaced without disturbing adjoining components such as the faucet or drain, and surfaces featuring design elements can be easily changed or swapped out.

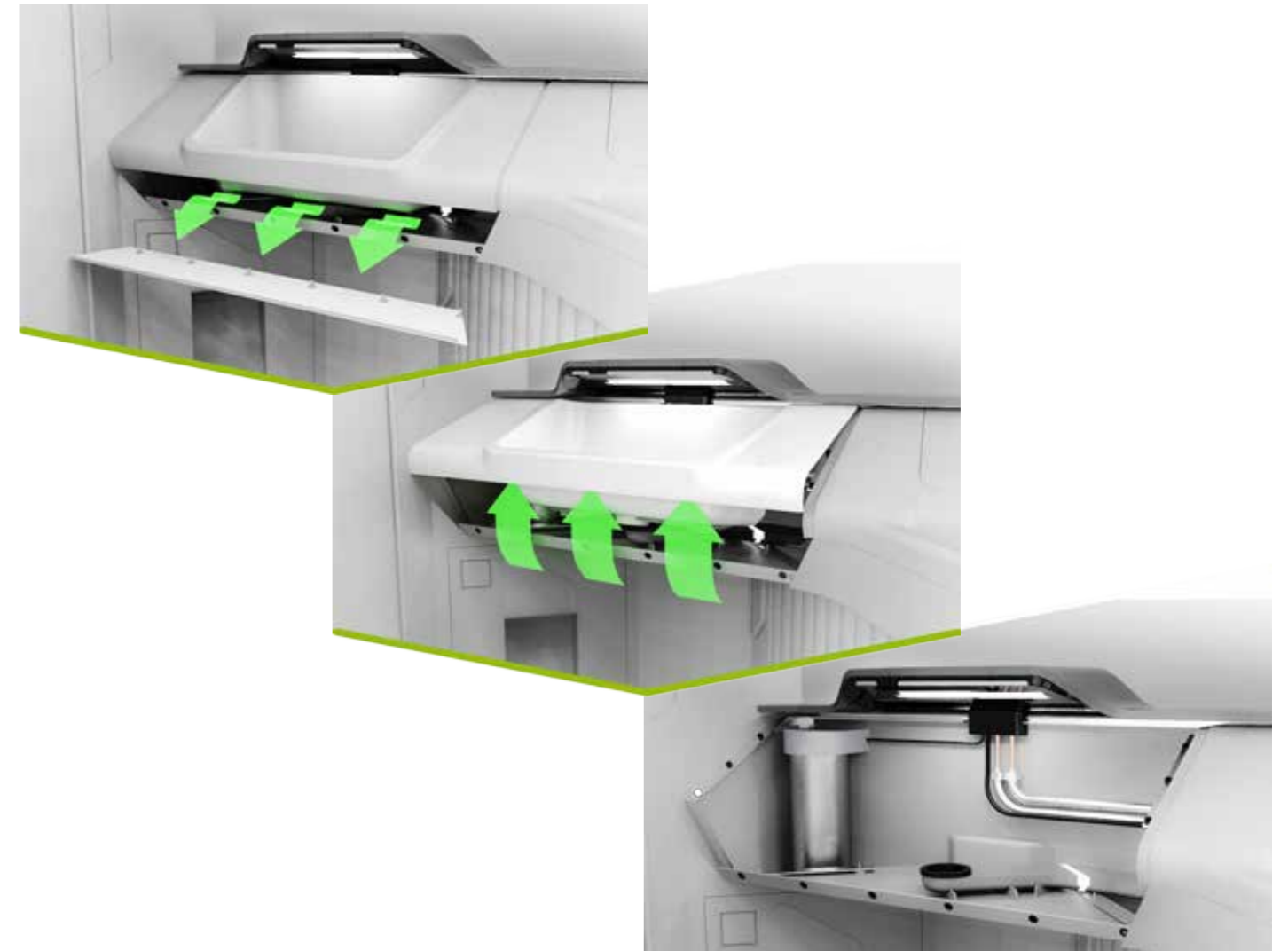
The standardized mounting system makes quick work of assembling and disassembling the structure, and of maintaining the water system inlets and outlets. And removing and mounting the washbasin itself completed with a few clicks.

Indeed, detaching the basin involves only two simple steps that reduce wear-and-tear on the parts:

- Removing the front cover
- Pulling and lifting the washbasin
- to disengage it

Innovations:

- Replacement in just a few steps
- Easier access to supply systems



EFFICIENT DESIGN – PRACTICAL FUNCTIONS

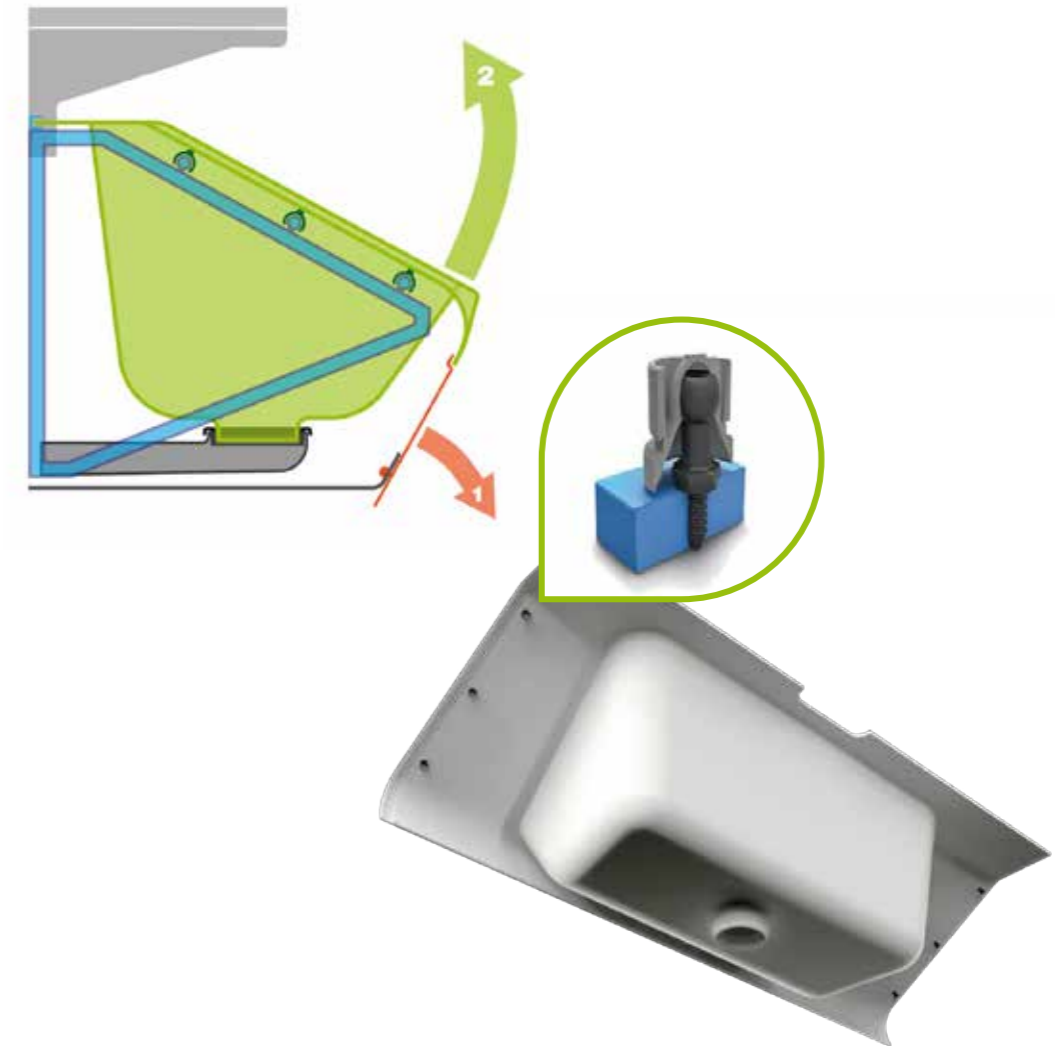
The K2 EasySwap Future Basin comprises not only the washbasin itself, but also the seamlessly connected components as well as the paneling that conceals the joints.

The mounting system is based on the simple yet effective principle of snap coupling. It consists of only two parts – ball pins and a coupling – by which the washbasin can be attached and detached to the frame. The coupling is affixed to the edges of the component to be mounted and ensures positive locking with its counterpart. The ball pins are affixed to the frame and, once in place, snap into the coupling. This connection guarantees a secure hold and can be repeatedly opened and closed with ease. It also allows for tolerance compensation between the components, and has a vibration- and noise-decoupling effect.

The washbasin's thermoplastic material offers countless advantages to be enjoyed, including the thermoplastic's low-cost tools and manufacturing, plus reduced weight of individual components and the structure as a whole. The best material on the market also comes at the best price.

Innovations:

- Snap coupling for fast and secure attachment
- Cost-effective materials and manufacturing processes



MAKE YOUR AIRLINE STAND APART

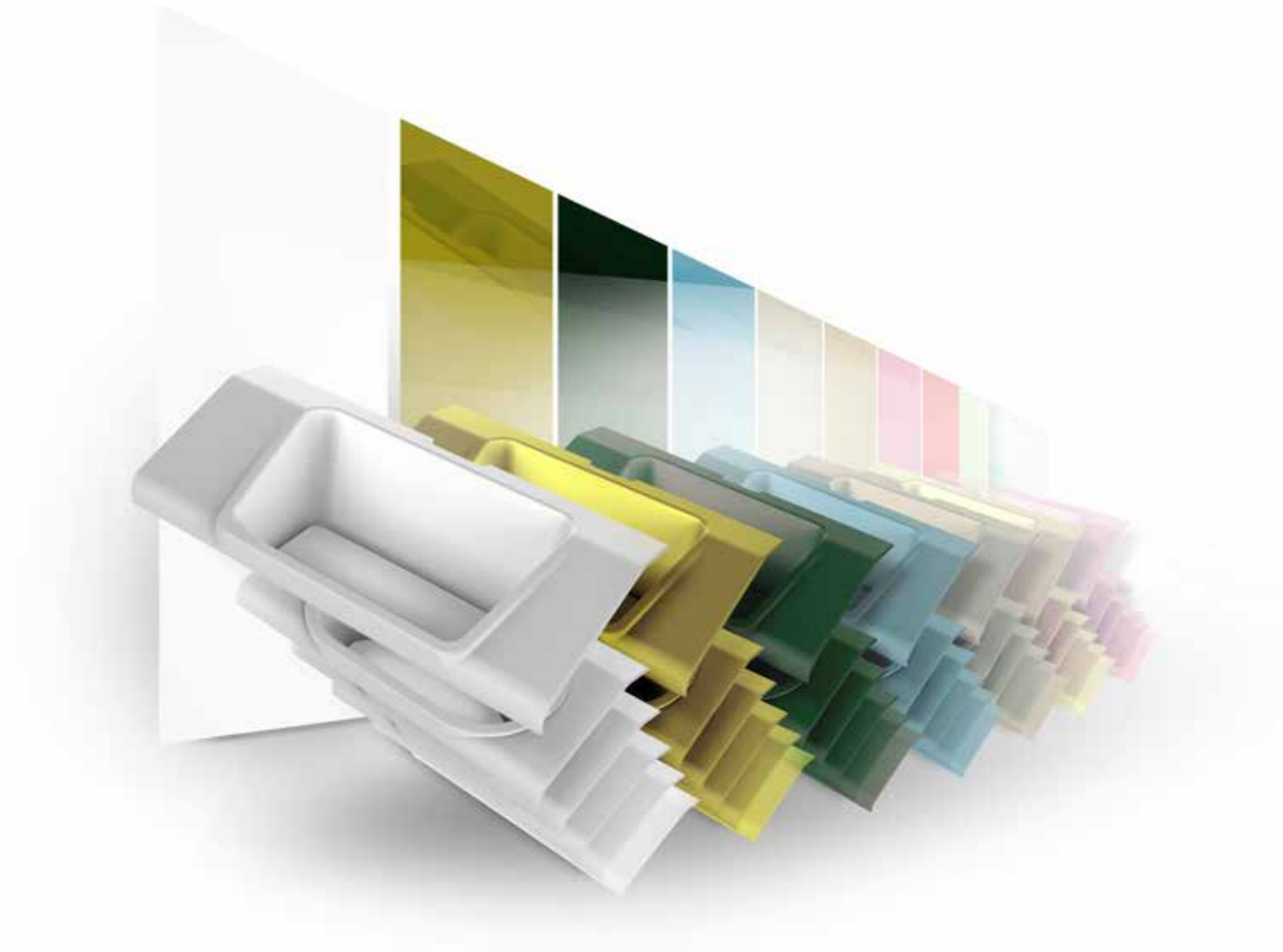
The washbasin was designed not only to be highly functional, but also to allow airlines to customize their lavatory areas, for example, by adding their logos.

The washbasin's modular structure and standardized connections make the color and shape highly customizable. Indeed, as long as the connection points do not change, any design is possible. The thermoplastic from which it is made allows for great variety in terms of surface structure and color. A low-cost version without highgloss coating is also possible.

The option of substituting the drain plug with a fixed decorative cover creates yet more scope for customized design. The components' design can be flexibly adapted to the client's needs, even after the structure has been assembled. For charter airlines in particular, this creates entirely new and easily implementable possibilities for customization.

Innovations:

- Many different surfaces, shapes and colors are possible
- Decorative drain cover as a design option
- Wide range of options, from low-cost to high-end



KRÜGER AVIATION & ZWEIGRAD DESIGN

a powerful partnership that gives creativity wings

It began with a simple idea and two highly motivated teams — the K2 Lavatory. All the participants in a joint creative workshop realized instantly how much potential this assignment would have if development focused on problems that all kinds of passengers face. This symbiosis of creativity, design and construction yielded an astonishing range of improvements and additional benefits.

The Lavatory matures during a structured development process in which all work results are tested and improved immediately using simple prototypes — physical and virtual — into a fully designed functioning model. The Lavatory is an emotional project that fused the partners together, with their motivated employees burning with passion and expertise for their craft, driven to find the best solution that suits all passengers — ultimately giving the project its wings.

And as you can see — we had a lot of fun, too!

K R Ü G E R
A v i a t i o n 

www.krueger-aviation.de

thebeauty
ofunderstan
ding 

www.zweigrad.de

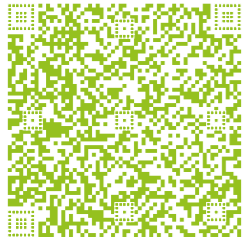


CONTACT

Our highly motivated team is fully dedicated to customer satisfaction. For more information, feel free to contact us at the address below or call or write us.

Contact

Tel. +49 (0)40 / 2983500 - 20
info@krueger-aviation.de
www.krueger-aviation.de



Legal Notice

Krüger Aviation GmbH
Hanskampring 5
22885 Barsbüttel
Germany

Managing Directors

Nils Stoll

Design and Production

letscommunicate GmbH, www.letscommunicate.de

Photos

Sonja Brüggemann, www.sonjabrueggemann.de

Animationen

zweigrad GmbH & Co. KG, www.zweigrad.de





■ EN 9100

■ EN 9120